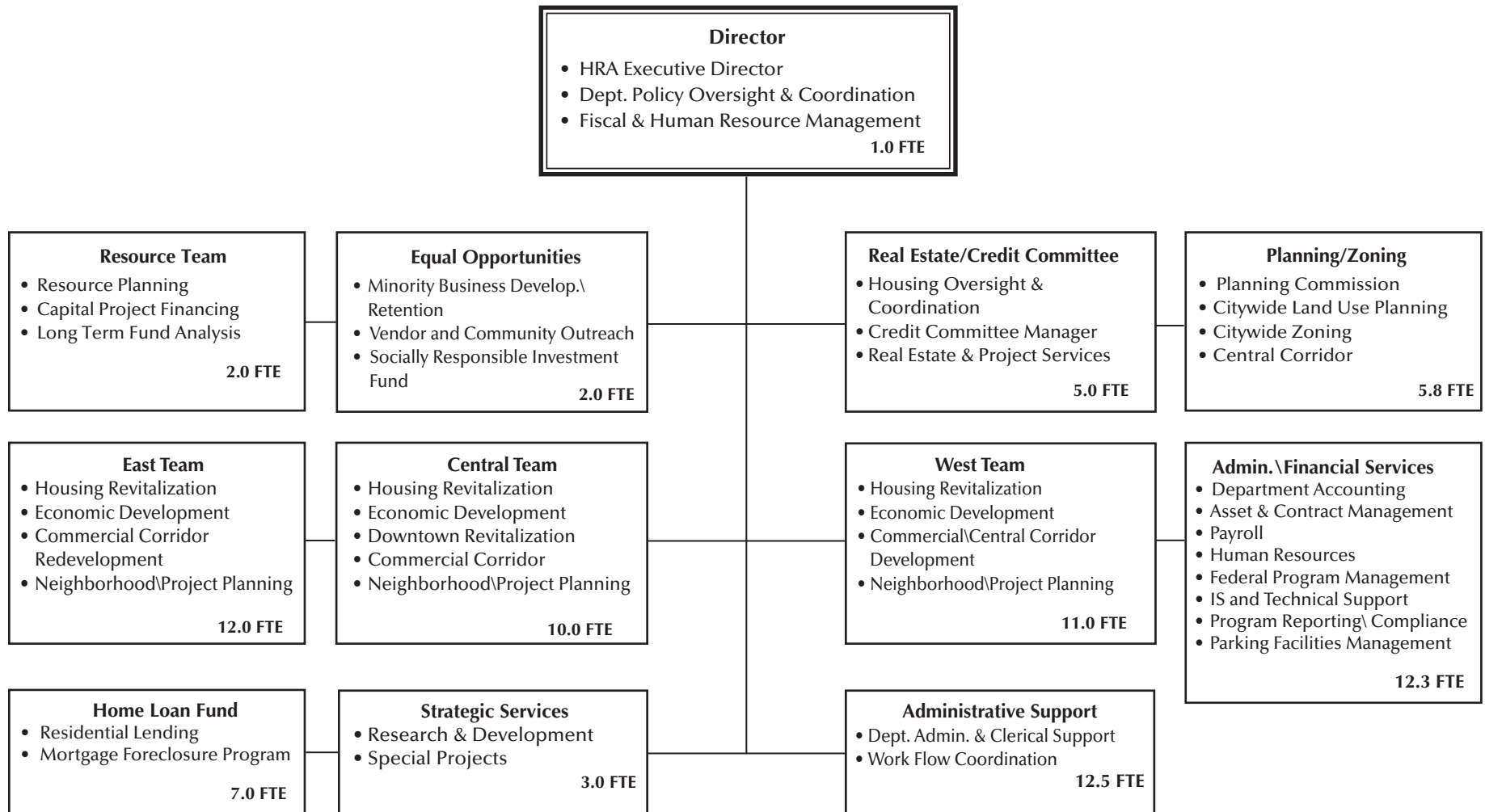


Planning and Economic Development

To actively create opportunities and encourage investment for the benefit of Saint Paul residents and businesses, which preserve, sustain, and grow the city's diverse neighborhoods.



(Total 83.6 FTEs)

About the Department of Planning and Economic Development

What We Do (Description of Services)

- PED's mission is "to actively create opportunities and encourage investment for the benefit of Saint Paul residents and businesses, which preserve, sustain, and grow the city's diverse neighborhoods." We accomplish this by assisting in the production of new housing, the rehabilitation and preservation of existing housing, and strategic commercial and economic development investment. These actions are guided by careful planning, community collaboration, and inclusiveness. PED continues to build upon its past accomplishments, while looking forward to help establish Saint Paul, Minnesota as the Most Livable City in America.
- Provides sound administration, oversight, coordination, and fiscal management in excess of \$160 million dollars, including an annual \$85 million budget.
- Administers a combined City/HRA loan portfolio in excess of 1,300 loans, with a value of \$125 million dollars.
- PED's annual operations budget is financed solely with non-general funds, and PED receives no general fund tax levy support.
- Staff manage more than 200 agreements with community organizations that provide neighborhood input and involvement, housing revitalization, economic development, and crime prevention initiatives.
- The Minority Business Expansion and Retention Program and Vendor Outreach Program provide opportunities for both new start-up businesses and under-represented businesses to become active and successful in participating in City contracting opportunities.

Statistical Profile

- Administers in excess of \$80 million annually in Federal, State, and local resources.
- 2008 operations budget is \$8.9 million, supporting 83.6 FTE. The department receives no general fund tax levy support.
- Provides overall coordination, management, contracting and oversight for more than 200 neighborhood, community, business and economic development activities.
- PED is a public lending institution, with a 1,300+ portfolio valued at \$122+ million.

2006-2007 Accomplishments

- The end of FY2006 and early 2007 was a transition period for PED, completing the last of the Housing 5000 Initiative activities, and moving into a more strategic community revitalization focus.
- FY2007 has seen the emergence of the Invest Saint Paul Initiative. PED has been at the forefront of the city's efforts to date. By gathering and analyzing neighborhood statistical data, leading neighborhood focus groups, and compiling funding projections, PED has been a leader in the development of ISP.
- The hard work continues on the Central Corridor initiative as neighborhoods, businesses, the City, and all stakeholders work to move this major undertaking forward. The Central Corridor will continue to require significant PED human and fiscal resources. PED staff continues to provide the lead in coordinating the community long-range visioning process, assessing development potential and options, and structuring the multi-year development framework.
- The decision by the Ford Motor Company to close its Saint Paul manufacturing plant has required PED to lead all discussions on the future use of this site. As is the case with Central Corridor, PED staff is leading the effort to bring neighborhood residents, businesses, and all sectors of the community into a meaningful dialogue on the future of the site. We completed Phase I of the planning process, and have begun Phase II.
- The Minority Business Development and Retention Initiative successfully continued, including the Socially Responsible Investment Program. A network of community partnerships has been established to increase technical and financial resources for women, minorities, and small businesses. During 2007, the program increased the level of partnerships.
- Provided strategic investment in public infrastructure and amenities, which in turn assisted private development in commercial corridors, including Mainstreet partnerships on Payne Avenue, Selby Avenue, and District Del Sol.

Key Performance Measures

Performance Objective: Implement PED portions of Invest Saint Paul Initiative				
Performance Indicator: Department provides administration & oversight of ISP housing & economic development initiatives				
MEASURES:	2005 Actual	2006 Actual	2007 Estimated	2008 Projected
Contract with CDC's for neighborhood engagement/technical assistance			6	6
Assist in Mortgage Foreclosure Prevention in ISP areas			50	100
Removal of blighting structures			18	14
Provision of rehabilitation assistance			123	129

Performance Objective: Implement as appropriate recommendations from the comprehensive assessment of PED operations, to ensure staffing level, staff capacity, organizational structure and allocation of resources are optimized to achieve the mission and goals of PED, and to increase PED effectiveness within the city and with other community partners.				
Performance Indicator: Implement appropriate recommendations by 12/31/07				
MEASURES:	2005 Actual	2006 Actual	2007 Estimated	2008 Projected
Complete Department analysis			09/01/07	
Analyze recommendations w/staff			12/31/07	
Implement recommendations				12/31/08

Performance Objective: Complete 15 significant planning projects in 2008				
Performance Indicator: Plans/projects will be completed by staff, forwarded to the Planning Commission, and the Mayor and City Council for review & approval.				
MEASURES:	2005 Actual	2006 Actual	2007 Estimated	2008 Projected
Adoption of 10 Year Citywide Comprehensive Plan				12/31/08
Completion of significant planning documents	21	21	15	15

Performance Objective: Produce or preserve 1,000 units of housing through new construction and rehabilitation, including supportive housing to end long-term homelessness with 30% of the units affordable at 50% of the area median income.				
Performance Indicator: Verification of creation of housing units.				
MEASURES:	2005 Actual	2006 Actual	2007 Estimated	2008 Projected
New and substantially rehabilitated housing units	1,596	875	700	1,200

Performance Objective: Award at least 15% of the total development costs of department projects to MBE, WBE, and SBE companies.				
Performance Indicator: Department contract awards represent at least 15% of the total costs to MBE, WBE, and SBE companies.				
MEASURES:	2005 Actual	2006 Actual	2007 Estimated	2008 Projected
Awards 15% of TDC to MBE, WBE & SBE companies	15%	15%	15%	15%
Assistance to Start Up Businesses	100	120	100	144
Provision of technical services to minority, women and small businesses	150	200	200	240
Financial Assistance to MBE, WBE, SBE	10	20	20	10

2008 Budget Plan

2008 Priorities

- Administer the Invest Saint Paul program activities assigned to PED. Focus public, private and neighborhood resources on comprehensive neighborhood revitalization issues, including mortgage foreclosure prevention, removal of blight, single and multi-family rehabilitation, and economic development opportunities on key commercial corridors.
- Continue the development of the Central Corridor Initiative.
- Complete Phase II of Ford Site Redevelopment plan.
- Focus economic development activities on increasing investment, promoting partnerships, creating jobs, and sustaining the tax base.
- Integrate city planning efforts with emerging development priorities.
- Ensure that scarce financial resources are utilized on activities which best support the goals of the Mayor's Strategic Plan.
- Produce and preserve 1,200 units of housing through new construction and rehabilitation including supportive housing to end long term homelessness with 30% of the units affordable @ 50% of the area median income (AMI).
- Expand the efforts of the Minority Business Development and Retention Program and Small Business Expansion Programs, and continue participation in departmental vendor awards of at least 15% of total development costs.
- Complete professional planning work on the city's 10 Year Comprehensive Plan, and 15 significant planning documents.
- Pursue federal, state and local funding opportunities, create new intergovernmental partnerships.
- Engage community and business groups, to encourage involvement of all sectors of our community to promote responsible decision making.

2008 Budget Explanation

Base Adjustments

The 2007 adopted budget was adjusted to set the budget base for 2008. The base includes the anticipated growth in salaries and fringes for 2008 for employees related to the bargaining process. It also includes 2.5% inflation growth on services and 3% on goods and materials.

Mayor's Recommendation

The proposed budget for Planning and Economic Development for 2008 is \$19,314,585, compared to \$18,901,013 in 2007. This is an increase of \$413,572. The department budget is entirely in special funds, PED receives no direct general fund resources. The department budget is split between the Operations Fund (\$8,966,585) and the Community Development Block Grant (\$10,348,000). The Operations Fund budget for 2008 is \$413,572 more than the 2007 adopted budget. The proposed 2008 PED staff complement is 83.6 FTEs, or 0.3 FTEs more than 2007. This change in staffing includes work by other city staff as it relates to the Central Corridor, and whose costs are being covered by a portion of the Central Corridor grant. The 2008 budget for the Community Development Block Grant is proposed at the same 2007 level.

The proposed budget for Planning and Economic Development reflects the department\office's share of spending for the new Enterprise Technology Initiative (ETI) and includes costs associated with the revised Central Service Cost allocation methodology as described in the Special Fund Highlights for Fund 164.

2008 Budget Plan (continued)

2008 Budget Explanation (continued)

Council Actions

- The City Council adopted the Planning and Economic Development budget and recommendations as proposed by the Mayor.

The 2008 adopted budget is \$19,314,585 which is all special funds. This includes 83.6 FTEs all within the special funds as well.

Spending Reports

Planning & Economic Development

Department/Office Director: **CECILE M BEDOR**

	2005 2nd Prior Exp. & Enc.	2006 Last Year Exp. & Enc.	2007 Adopted	2008 Mayor's Proposed	2008 Council Adopted	Change from Mayor's Proposed	2007 Adopted
Spending By Unit							
001 GENERAL FUND	86,073						
100 COMMUNITY DEVELOPMENT BLOCK GRANT	8,038,361	7,039,879	10,348,000	10,348,000	10,348,000		
101 NEIGHBORHOOD REVITALIZATION PROG	1,686,606	2,593,269					
126 PED OPERATIONS FUND	7,950,040	8,078,139	8,553,013	8,966,585	8,966,585		413,572
149 CITY DWTN CAPT'L PROJS NOTE REPAY F	2,168,453	910,191					
925 CAPITAL IMPROVEMENT BOND FUND	8,585						
Total Spending by Unit	19,938,119	18,621,477	18,901,013	19,314,585	19,314,585	0	413,572
Spending By Major Object							
SALARIES	4,933,168	4,927,878	5,348,711	5,567,845	5,567,845		219,134
SERVICES	5,268,085	4,046,673	1,163,430	1,238,021	1,238,021		74,591
MATERIALS AND SUPPLIES	60,235	54,281	74,600	104,400	104,400		29,800
EMPLOYER FRINGE BENEFITS	1,565,574	1,553,301	1,674,332	1,770,408	1,770,408		96,076
MISC TRANSFER CONTINGENCY ETC	7,661,057	8,039,344	10,624,940	10,618,911	10,618,911		-6,029
DEBT							
STREET SEWER BRIDGE ETC IMPROVEMENT							
EQUIPMENT LAND AND BUILDINGS	450,000		15,000	15,000	15,000		
Total Spending by Object	19,938,119	18,621,477	18,901,013	19,314,585	19,314,585	0	413,572
Percent Change from Previous Year		-6.6%	1.5%	2.2%	0.0%	0.0%	2.2%
Financing By Major Object							
GENERAL FUND	86,073						
SPECIAL FUND							
TAXES							
LICENSES AND PERMITS							
INTERGOVERNMENTAL REVENUE	7,481,464	7,215,662	8,348,000	8,348,000	8,348,000		
FEES, SALES AND SERVICES	8,461,749	8,021,318	8,317,212	8,804,432	8,804,432		487,220
ENTERPRISE AND UTILITY REVENUES	26,561	26,145	2,000,000	2,000,000	2,000,000		
MISCELLANEOUS REVENUE	569,170	2,227,149		194,304	194,304		194,304
TRANSFERS	1,997,464	1,537,270					
FUND BALANCES			235,801	-32,151	-32,151		-267,952
Total Financing by Object	18,622,481	19,027,544	18,901,013	19,314,585	19,314,585	0	413,572
Percent Change from Previous Year		2.2%	-0.7%	2.2%	0.0%	0.0%	2.2%

City of Saint Paul 2008 Budget Fund Spending Plan Summary Council Adopted Budget

Fund: **100 COMMUNITY DEVELOPMENT BLOCK GRANT**

Fund Manager: ROBERT J HAMMER

Department: **13 PLANNING & ECONOMIC DEVELOPMENT**

Department Director: CECILE M BEDOR

Fund Purpose:

TO ACCOUNT FOR MONIES RECEIVED FROM THE U.S. DEPARTMENT OF HOUSING AND URBAN DEVELOPMENT UNDER THEIR COMMUNITY DEVELOPMENT BLOCK GRANT PROGRAM, ALSO OTHER MISCELLANEOUS REVENUES DERIVED FROM PROJECTS OPERATED UNDER THIS PROGRAM, THESE MONIES ALL TO BE EXPENDED FOR THE DEVELOPMENT OF A VIABLE URBAN COMMUNITY, BY PROVIDING DECENT HOUSING AND A SUITABLE LIVING ENVIRONMENT AND EXPANDED ECONOMIC OPPORTUNITIES, PRINCIPALLY FOR PERSONS OF LOW AND MODERATE INCOME.

	Spending Amount					Personnel FTE/Amount (salary+Allowance+Negotiated Increase)				
	2005	2006	2007	2008		2005	2006	2007	2008	Change from
	2nd Prior Exp. & Enc.	Last Year Exp. & Enc.	Adopted	Amount	Change/Percent	Authorized FTE	FTE/Amount	Adopted FTE/Amount	Council Adopted FTE/Amount	2007 FTE/Amount
by Type of Expenditure										
SALARIES										
SERVICES	1,879,085	1,808,670								
MATERIALS AND SUPPLIES										
EMPLOYER FRINGE BENEFITS										
MISC TRANSFER CONTINGENCY ETC	6,159,276	5,231,208	10,348,000	10,348,000						
DEBT										
STREET SEWER BRIDGE ETC IMPROVEMENT										
EQUIPMENT LAND AND BUILDINGS										
Spending Total	8,038,361	7,039,879	10,348,000	10,348,000	0	0.0%				
by Activity										
37803 CD YEAR 18 PUBLIC IMPROVEMENTS			10,000,000	10,000,000						
39290 HUD EMERGENCY SHELTER PROGRAM	333,541	470,619	348,000	348,000						
39294 FED GRANT-ROSE HILL PROJECT	434,394									
94002 CONVERTED CDBG PROJ.	4,688,001	4,778,538								
96004 RENTAL REHABILITATION	987,047	280,953								
96007 COMMERCIAL REHABILITATION	806,000	349,000								
96011 WEST SIDE NHS RLF	99,804	753,348								
96027 HOMEOWNER REHAB MATCHING GRANT	178,881	47,541								
96028 PAYNE-ARCADE COMM. IMP.	135,114	103,359								
96029 ECON. DEV. LOAN LEVERAGE FUND	191,460	256,520								
96040 NEIGHBORHOOD HEALTH CLINICS	94,119									
97001 BLOCK NURSE PROGRAM	90,000									
Fund Total	8,038,361	7,039,879	10,348,000	10,348,000	0	0.0%			0.0	0
Percent Change from Previous Year		-12.4%	47.0%							

City of Saint Paul 2008 Budget Fund Spending Plan Summary Council Adopted Budget

Fund: **126 PED OPERATIONS FUND**

Fund Manager: CECILE M BEDOR

Department: **13 PLANNING & ECONOMIC DEVELOPMENT**

Department Director: CECILE M BEDOR

Fund Purpose:

TO ACCOUNT FOR THE OPERATIONAL EXPENDITURES WITHIN THE DEPARTMENT OF PLANNING AND ECONOMIC DEVELOPMENT WHICH ARE FINANCED BY A VARIETY OF FUNDING SOURCES. TO MAINTAIN THE CURRENT AND REFINE FOR THE FUTURE A CITYWIDE PROGRAM FOR PLANNING AND ECONOMIC DEVELOPMENT WHICH WILL CONTINUE THE FAVORABLE CLIMATE FOR DEVELOPMENT IN THE CITY AND PROVIDE AN ORDERLY FRAMEWORK FOR PLANNED DEVELOPMENT IN THE YEARS TO COME.

	Spending Amount						Personnel FTE/Amount (salary+Allowance+Negotiated Increase)							
	2005	2006	2007	2008		Change from 2007	2005	2006	2007	2008		Change from 2007	Change from 2007	
	2nd Prior Exp. & Enc.	Last Year Exp. & Enc.	Adopted	Amount	Change/Percent		Authorized FTE	FTE/Amount	Adopted FTE/Amount	FTE/Amount	FTE/Amount			
by Type of Expenditure														
SALARIES	4,933,168	4,927,878	5,348,711	5,567,845	219,134	4.1%								
SERVICES	1,363,223	1,264,783	1,163,430	1,238,021	74,591	6.4%								
MATERIALS AND SUPPLIES	60,235	54,281	74,600	104,400	29,800	39.9%								
EMPLOYER FRINGE BENEFITS	1,565,574	1,553,301	1,674,332	1,770,408	96,076	5.7%								
MISC TRANSFER CONTINGENCY ETC	27,840	277,895	276,940	270,911	-6,029	-2.2%								
DEBT														
STREET SEWER BRIDGE ETC IMPROVEMENT														
EQUIPMENT LAND AND BUILDINGS			15,000	15,000										
Spending Total	7,950,040	8,078,139	8,553,013	8,966,585	413,572	4.8%								
by Activity														
36010 DIRECTORS OFFICE - ADMINISTRATION	29,383	8,658	8,948	8,948										
36012 CENTRAL CORRIDOR GRANT		250,000		194,304	194,304					0.8	52,562	0.8	52,562	
36075 DEPT.WIDE PED	7,920,657	7,819,481	8,544,065	8,763,333	219,268	2.6%	92.2	86.1	83.3	5,348,711	82.8	5,515,283	-0.5	166,572
Fund Total	7,950,040	8,078,139	8,553,013	8,966,585	413,572	4.8%	92.2	86.1	83.3	5,348,711	83.6	5,567,845	0.3	219,134
Percent Change from Previous Year		1.6%	5.9%				-6.6%	-3.3%				0.4%	4.1%	

Financing Reports

Financing by Major Object Code

Department: **13 PLANNING & ECONOMIC DEVELOPMENT**

GENERAL FUND

		2005 2nd Prior Exp. & Enc.	2006 Last Year Exp. & Enc.	2007 Adopted	2008 Council Adopted	Change from 2007 Adopted
6602	INTEREST ON INVESTMENTS			97,219		-97,219
6928	RECOVERABLE ADVANCE FR GENERAL FUND					
MISCELLANEOUS REVENUE		0	0	97,219	0	-97,219
7302	TRANSFER FROM ENTERPRISE FUND	360,000	360,000			
7303	TRANSFER FROM INTERNAL SERVICE FUND		25,000			
7306	TRANSFER FROM CAP PROJ FUND-OTHER	100,000				
TRANSFERS		460,000	385,000	0	0	0
Fund Total		460,000	385,000	97,219	0	-97,219

Financing by Major Object Code

Department: **13 PLANNING & ECONOMIC DEVELOPMENT**

SPECIAL FUNDS

		2005 2nd Prior Exp. & Enc.	2006 Last Year Exp. & Enc.	2007 Adopted	2008 Council Adopted	Change from 2007 Adopted
3099	OTHER FED DIRECT GRANTS-IN-AID	434,394				
3399	COMMUNITY DEV. BLOCK GRANT	5,599,950	4,628,707	8,348,000	8,348,000	
3490	OTHER STATE AIDS	349,761	1,092,661			
3500	COUNTY DIRECT GRANTS-IN-AID		22,360			
3802	METROPOLITAN COUNCIL	1,097,359	1,471,934			
INTERGOVERNMENTAL REVENUE		7,481,464	7,215,662	8,348,000	8,348,000	0
4034	COLLECTION - FEES	301	74			
4076	SUBPOENA	67	146			
4080	ZONING APPEALS - REZONING PETITION	96,166	76,069	90,000	70,000	-20,000
4090	HOUSING FEES	26,987	9,610	28,800	16,675	-12,125
4095	ADMINISTRATION	7,915,898	7,664,215	7,852,912	8,456,657	603,745
4096	LOAN ORIGATION FEE	222,452	203,953	205,000	188,500	-16,500
4097	REAL ESTATE CLOSING FEE	1,875	135	3,000	3,000	
4098	APPLICATION FEE	73,717	51,550	136,500	68,900	-67,600
4099	FEES - N.O.C.	24,297	14,850			
4204	MAPS, PUBLICATIONS & REPORTS	3,631	715	1,000	700	-300
4208	SALES OF LAND FOR RESALE - PED	96,358	1			
4399	SERVICES N.O.C.					
FEES, SALES AND SERVICES		8,461,749	8,021,318	8,317,212	8,804,432	487,220
5399	OTHER REVENUE N.O.C.	26,561	26,145	2,000,000	2,000,000	
ENTERPRISE AND UTILITY REVENUES		26,561	26,145	2,000,000	2,000,000	0
6602	INTEREST ON INVESTMENTS	30,487	33,635			
6604	INTEREST ON ADVANCE OR LOAN	50,716	109,948			
6606	INTEREST ON NOTES & LOANS RECEIVBLE	33,605	19,362			
6611	INC(DEC) FMV OF INVESTMENT	-10,635	211			
6801	RENTS	100	160			
6914	REFUNDS - JURY DUTY PAY	60	244			
6920	REFUNDS - UNUSED LOANS	704,978	480,753			
6922	REPAYMENT OF ADVANCE OR LOAN	281,650	2,224,503			

Financing by Major Object Code

Department: **13 PLANNING & ECONOMIC DEVELOPMENT**

SPECIAL FUNDS

		2005 2nd Prior Exp. & Enc.	2006 Last Year Exp. & Enc.	2007 Adopted	2008 Council Adopted	Change from 2007 Adopted
6930	REHAB LOANS PRINCIPAL PAYMENT	424,582	152,936			
6966		-946,879	-1,045,155			
6970	PRIVATE GRANTS		250,000		194,304	194,304
6999	OTHER MISCELLANEOUS REVENUE N.O.C.	506	552			
MISCELLANEOUS REVENUE		569,170	2,227,149	0	194,304	194,304
7304	TRANSFER FROM DEBT SERVICE FUND	1,929,149	1,417,285			
7306	TRANSFER FROM CAP PROJ FUND-OTHER	68,315	119,985			
TRANSFERS		1,997,464	1,537,270	0	0	0
9830	USE OF FUND BALANCE			235,801		-235,801
9831	CONTRIBUTION TO FUND BALANCE				-32,151	-32,151
FUND BALANCES		0	0	235,801	-32,151	-267,952
Fund Total		18,536,408	19,027,544	18,901,013	19,314,585	413,572

<u>Department Total</u>	<u>18,996,408</u>	<u>19,412,544</u>	<u>18,998,232</u>	<u>19,314,585</u>	<u>316,353</u>
--------------------------------	--------------------------	--------------------------	--------------------------	--------------------------	-----------------------

City of Saint Paul Financing Plan by Department and Activity

Fund: **001 GENERAL FUND**

Fund Manager: MATTHEW G SMITH

Assumptions for Major Revenue Sources and Explanation for Significant Financing Changes:

THE GENERAL FUND RECEIVES THE VAST MAJORITY OF ITS REVENUE FROM PROPERTY TAXES, STATE AIDS AND FRANCHISE FEES.

Department	Activity	2005 2nd Prior Exp. & Enc.	2006 Last Year Exp. & Enc.	2007 Adopted	2008 Council Adopted	Change from 2007
13	PLANNING & ECONOMIC DEVELOPMENT					
06000	PLANNING & ECON DEV CONTRIBUTION	460,000	385,000	97,219		-97,219
	Department Total	460,000	385,000	97,219	0	-97,219
	<u>Financing by Major Object</u>					
	TAXES					
	LICENSES AND PERMITS					
	INTERGOVERNMENTAL REVENUE					
	FEES, SALES AND SERVICES					
	ENTERPRISE AND UTILITY REVENUES					
	MISCELLANEOUS REVENUE			97,219		-97,219
	TRANSFERS	460,000	385,000			
	FUND BALANCES					
	Total Financing by Object	460,000	385,000	97,219	0	-97,219

City of Saint Paul Financing Plan by Department and Activity

Fund: **100 COMMUNITY DEVELOPMENT BLOCK GRANT**

Fund Manager: ROBERT J HAMMER

Assumptions for Major Revenue Sources and Explanation for Significant Financing Changes:

CDBG GRANT YEAR IS DIFFERENT THAN THE CITY'S FISCAL YEAR. IT STARTS JUNE 1 AND ENDS MAY 31 OF THE FOLLOWING YEAR. ALSO THE CDBG FUND IS A MULTI-YEAR FUND. FINANCING AND SPENDING PLANS ARE THE BEST ESTIMATES AVAILABLE AT THE TIME OF COMPLETING BUDGET DOCUMENTS. HOWEVER, ACTUAL NUMBERS WILL BE AVAILABLE WHEN THE CITY'S PROPOSAL IS APPROVED BY HUD ON JUNE 1. AT THAT TIME THE CDBG BUDGET WILL BE AMENDED TO INCORPORATE HUD-APPROVED BUDGET.

Department	Activity	2005 2nd Prior Exp. & Enc.	2006 Last Year Exp. & Enc.	2007 Adopted	2008 Council Adopted	Change from 2007
13	PLANNING & ECONOMIC DEVELOPMENT					
39294	FED GRANT-ROSE HILL PROJECT	434,394				
39000	CDBG I RECEIPTS AND DEPOSITS	-1,026,711	574,730	10,000,000	10,000,000	
39290	HUD EMERGENCY SHELTER PROGRAM	333,541	470,619	348,000	348,000	
94002	CONVERTED CDBG PROJ.	4,913,906	4,239,117			
96004	RENTAL REHABILITATION	983,067	284,932			
96007	COMMERCIAL REHABILITATION	796,000	359,001			
96011	WEST SIDE NHS RLF	42,362	810,790			
96027	HOMEOWNER REHAB MATCHING GRANT	187,826	28,077			
96028	PAYNE-ARCADE COMM. IMP.	131,598	104,185			
96029	ECON. DEV. LOAN LEVERAGE FUND	191,460	256,520			
96040	NEIGHBORHOOD HEALTH CLINICS	94,119				
97001	BLOCK NURSE PROGRAM	90,000				
	Department Total	7,171,562	7,127,971	10,348,000	10,348,000	0
	<u>Financing by Major Object</u>					
	TAXES					
	LICENSES AND PERMITS					
	INTERGOVERNMENTAL REVENUE	6,034,344	4,628,707	8,348,000	8,348,000	
	FEES, SALES AND SERVICES	96,659	75			
	ENTERPRISE AND UTILITY REVENUES	26,561	26,145	2,000,000	2,000,000	
	MISCELLANEOUS REVENUE	535,683	1,943,059			
	TRANSFERS	478,315	529,985			
	FUND BALANCES					
	Total Financing by Object	7,171,562	7,127,971	10,348,000	10,348,000	0

City of Saint Paul Financing Plan by Department and Activity

Fund: **126 PED OPERATIONS FUND**

Fund Manager: CECILE M BEDOR

Assumptions for Major Revenue Sources and Explanation for Significant Financing Changes:

MAJOR REVENUE SOURCES ARE THE COMMUNITY DEVELOPMENT BLOCK GRANT (CDBG), SERVICE REVENUE FROM SEVERAL HRA FUNDS - HRA GENERAL FUND (145), HRA LOAN ENTERPRISE FUND (117), HRA PARKING FUND (119), HRA TAX INCREMENT CAPITAL PROJECTS FUND (148), HRA FEDERAL & STATE PROGRAMS FUND (103), AND VARIOUS GRANTS AND SERVICE FEES. 20% OF TOTAL CDBG FUNDS IS AVAILABLE FOR GENERAL ADMINISTRATION. REVENUE FROM THE HRA IS BASED ON SERVICES PROVIDED TO HRA FUNDS. SERVICE FEE REVENUE HAS INCREASED OVER THE PAST SEVERAL YEARS.

Department	Activity	2005 2nd Prior Exp. & Enc.	2006 Last Year Exp. & Enc.	2007 Adopted	2008 Council Adopted	Change from 2007
13	PLANNING & ECONOMIC DEVELOPMENT					
36000	PED ADM - RECEIPTS AND MISC	8,365,150	8,021,243	8,553,013	8,772,281	219,268
36012	CENTRAL CORRIDOR GRANT		250,000		194,304	194,304
36075	DEPT.WIDE PED		244			
	Department Total	8,365,150	8,271,487	8,553,013	8,966,585	413,572
	<u>Financing by Major Object</u>					
	TAXES					
	LICENSES AND PERMITS					
	INTERGOVERNMENTAL REVENUE					
	FEES, SALES AND SERVICES	8,365,090	8,021,243	8,317,212	8,804,432	487,220
	ENTERPRISE AND UTILITY REVENUES					
	MISCELLANEOUS REVENUE	60	250,244		194,304	
	TRANSFERS					
	FUND BALANCES			235,801	-32,151	-267,952
	Total Financing by Object	8,365,150	8,271,487	8,553,013	8,966,585	219,268

Personnel Reports

**City of Saint Paul
 Personnel Summary by Fund, Department, Division and Activity**

SPECIAL FUNDS

Department		2005	2006	2007	2008	Change from
Division	Activity	Adopted FTE	Adopted FTE	Adopted FTE	Council Adopted FTE	2007 Adopted
13	PLANNING & ECONOMIC DEVELOPMENT					
1305	P.E.D. ADMINISTRATION					
	36012 CENTRAL CORRIDOR GRANT				0.8	0.8
	36075 DEPT.WIDE PED	92.2	86.1	83.3	82.8	-0.5
	Division Total	92.2	86.1	83.3	83.6	0.3
	Department Total	92.2	86.1	83.3	83.6	0.3